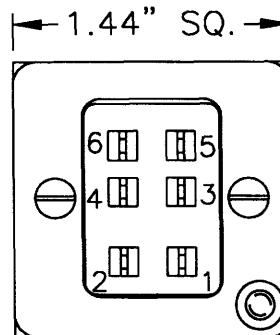
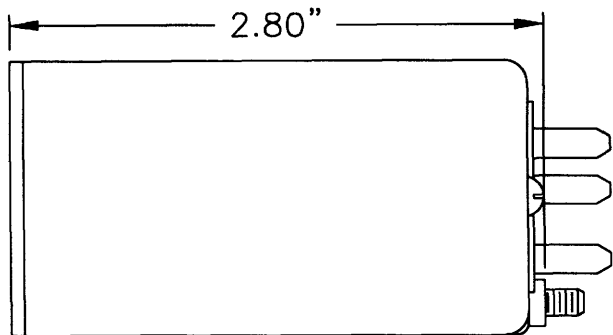


VOLTMETER CLUSTER MODULE

PART NUMBERS: ~~169CL-9-(*)~~ OUT OF PRODUCTION
169CL1-9-(*) Δ

* THIS DASH NO. WILL BE THE SUFFIX NUMBER ASSIGNED TO THE CLUSTER BEING BUILT. EXAMPLE: ~~169CL-9-TD9999~~ (4 PIN CONNECTOR)
169CL1-9-TD9999 (6 PIN CONNECTOR) Δ



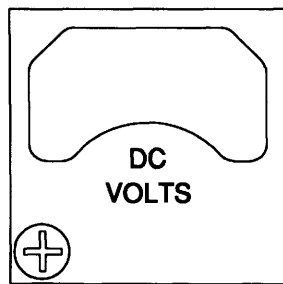
1. DIAL & BEZEL GRAPHICS:
LETTERS, NUMERALS & GRADS TO BE WHITE ON BLACK BACKGROUND

2. LIGHTING: BLUE WHITE COLOR

3. RANGE MARKS:
COLORS: GREEN PER 8A070-001
YELLOW PER 8A059-009
BLUE PER 8A059-014
RED PER 8A060-006

SIZE: ARC'S (.06 WIDE)
LINES (.03 x .12)

5. BEZEL:



A/W 5B845-016

MALE CONNECTOR
SIGMA TEK P/N S24003-004P Δ
MATING CONNECTOR
SIGMA TEK P/N S24003-004S

CONNECTOR WIRING

PIN 1 +VOLTS
PIN 2 -VOLTS
PIN 3 OPEN
PIN 4 +14 OR 28 VDC LIGHTS
PIN 5 OPEN
PIN 6 OPEN
CASE GROUND (LIGHTING)

				D	2/5/03	3-1314	9/13	PREP. BY	R.SCOTT	10/1/97
				C	8/28/98	2-8998	JB	TYPED BY		
				B	10/14/97	2-8453	JB	PROJ. ENG.	J.BISHOP	10/1/97
				A	10/1/97	RELEASE	JB	CHECKER		
ISS.	DATE	PCO NO.	CHK	ISS.	DATE	PCO NO.	CHK		NAME	DATE

CUSTOMER ACCEPTANCE SPECIFICATION

A1439M01

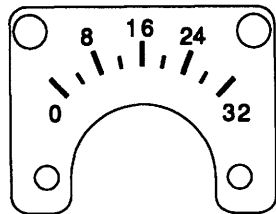
SIGMA-TEK® AUGUSTA, KANSAS	TITLE MODULE VOLTMETER 169CL-9-(*) OUT OF PROD. 169CL1-9-() Δ	SPEC. NO. 6A1439	ISSUE D
		PAGE 1 OF 2 PAGES	

CONFIDENTIALITY NOTICE
 This information is proprietary to SIGMA-TEK®, and any reproduction, disclosure, or use thereof is expressly prohibited without the written permission of Sigma Tek, Inc.

VOLTMETER MODULE

5. DIALS AVAILABLE:

DIAL 1
VOLTS



A/W 5B846-017

READING

0
8
16
24
32

FUNCTIONAL TEST

TEST (VOLTS)

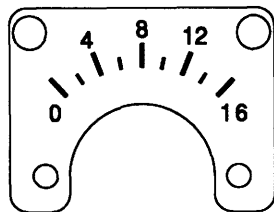
0
8
16
24
32

TOL. (\pm VOLTS)

2
2
2
2
2

FRICITION ERROR (± 2 VOLTS)
POSITION ERROR (± 2 VOLTS)

DIAL 2
VOLTS



A/W 5B846-018

READING

0
4
8
12
16

FUNCTIONAL TEST

TEST (VOLTS)

0
4
8
12
16

TOL. (\pm VOLTS)

1
1
1
1
1

FRICITION ERROR (± 1 VOLTS)
POSITION ERROR (± 1 VOLTS)

6. VARIABLES: (SELECT CONFIGURATION)

A. VOLTAGE

14 VDC 28 VDC

B. DIAL

DIAL 1 DIAL 2

C. RANGE MARKS (SPECIFY MARKS)

GREEN _____
YELLOW _____
BLUE _____
RED _____

NOTE: THIS AREA FOR SIGMA TEK USE ONLY

VARIABLE CHART

P/L 1V640-008				
14 VDC		28 VDC		
LAMP: S21006-020C		LAMP: S21006-021C		
N/P	PCB	N/P	PCB	
21-169-2-	6C1237-	21-169-2-	6C1237-	
DIAL 1	9191	001-28	9192	001-28
DIAL 2	9191	001-28	9192	001-28



A1439M02

CUSTOMER SPECIFICATION

SIGMA-TEK
AUGUSTA, KANSAS

TITLE

MODULE
VOLTMETER
-169CL-9-(-) OUT OF PROD.
169CL1-9-(-)

SPEC. NO.

6A1439

ISSUE

D

PAGE

2

OF

2

PAGES